



VILLAGE OF SILVERTON

COMMITTEE OF THE WHOLE COUNCIL AGENDA

SILVERTON COUNCIL – ONLINE MEETING

June 23, 2020

4:00 pm

A. CALL TO ORDER

B. THE VILLAGE OF SILVERTON ACKNOWLEDGES THE INDIGENOUS PEOPLES ON WHOSE TRADITIONAL TERRITORIES WE STAND

C. ADDITION OF LATE ITEMS IF ANY

D. DELEGATION

None at this time.

E. DISCUSSION

E1. Creekside Campground

E2. Lakeside Campground

F. ADJOURNMENT



Administrative Report: Hillary Elliott, CAO

Village of Silverton Council

COTW Meeting of Silverton Village Council June 23, 2020

Executive Summary

The purpose of this report is to seek some general input from Council regarding the Creekside Campground 2020 season.

Background

- Silverton traditionally has a first-come-first-serve unless there is a reservation for 6 sites or more per night
- Silverton traditionally allows for reservations in the Creekside Campground, Lakeside is left for first-come-first-serve only
- Slokan is not allowing for out of province reservations, similar to the provincial camping initiative. New Denver does not have any restrictions regarding bookings regarding COVID 19 regulations or guidelines
- Both Villages are open to self-contained units, only. No washrooms or other facilities are open. Water is available and their respective sani-dumps are open
- In mid July both Villages will reassess as the province continues to move through its phases in opening up the province after the COVID 19 closures
- July 15th Slokan may have full service in their campground; both New Denver and Slokan are monitoring the COVID 19 situation and may make adjustments or changes without advanced notice

Financial Impact

Significant.

With Lakeside Campground unlikely to generate revenue in 2020 and to date projections of expenses are significant, not opening Creekside for some revenue will have an impact on the 2020 budget.

Alternatively, there will be cost recovery as we are not paying out a campground attendant that is also allocated in the 2020 budget.

It is possible to open Creekside Campground in some form to help generate revenue. Other than taxation, the campground (even after expenses) is the largest revenue generation for the Village.

Discussion

Staff would like Council direction on the following operational decisions as they potentially change current campground Policy or have impacts on the 2020 budget:

- **Do not open Creekside Campground in 2020**
- **Open Creekside Campground when/if Lakeside opens in 2020**
- **Have staff explore options, create a plan, and open Creekside Campground July 15, 2020**
- **Is Council open to changes in the Campground Policy regarding reservations, or other operational standards to reflect the unusual season**
- **Does council wish to limit reservations to BC residents only, as the province and some other communities have done? (No restrictions on those that arrive for first-come-first-serve camping)**

BENEFITS & NEGATIVE IMPACTS:

Not opening Creekside Campground will negatively affect the Village's 2020 budget and impact the Village as visitors will not be here this year. They may not think of us in the future if we have a completely closed season.

Opening the Creekside Campground will allow for some revenue this year, when the campground costs are unusually high due to the changes in Lakeside Campground. Visitors will be able to enjoy Silverton and we will not miss a camping season.

Having visitors may affect the community in positive or negative ways with COVID 19 risks and residents not all interpretation the risks of COVID 19 in a unified manner. If we were to have an outbreak our community health center could be overwhelmed.

Not opening the campground could result in camping on our boulevards and elsewhere and result in social issues arising due to this behaviour and no designated place for camping.

LEGISLATIVE IMPACTS, PRECEDENTS, POLICIES:

- There are not any legislative impacts or precedents
- Staff may look into changing Village policy as the best operational decision for this unusual season living with COVID 19; staff would bring forward any policy changes to council before proceeding with these changes
- Staff would develop a plan for opening the Creekside Campground within Provincial regulations and guidelines, and when possible, similar to our partnering Villages for ease and consistency for the public; it would be subject to change without advance notice as the COVID 19 situation remains fluid and operations must be flexible and nimble in order to reflect any changes that may occur and the rapid response that could be required

Recommendation:

Pursuant to the Chief Administrative Officer's report, that Village of Silverton Council request staff to explore options, create a plan, and open Creekside Campground for July 15, 2020.

Hillary Elliott, CAO

From:
Sent: June 6, 2020 4:04 PM
To: 'Hillary Elliott'
Cc:
Subject: Lakeside Campground Survey
Attachments: Campground Survey.pdf

Hillary,

We realize this response to the Lakeside Campground survey is late. However, it is common for letters between our home in the US and any address in the Slocan Valley to take in excess of 3 weeks for delivery. Consistent with that, this survey only arrived today.

We are submitting it despite the deadline. We realize all the property owners surrounding the Lakeside Campground and abutting the Creekside are effected by the campground's use. However, due to location, we are one of only two homeowners DIRECTLY impacted by not only the traffic attendant to the use of the campground but also by the actual use of the campground itself. As such, we feel it is important that our input be considered.

Attached is a page with our replies to the first six questions. We didn't include answers to Questions 7 & 8, because we addressed the "anything else" question in the responses we provide. And we don't wish for anything new to be added.

<<...>>

We do wish to address one other issue, however. The logging that took place two months ago deserves comment. That project blocked access throughout the campground and also to our driveway off Water Street. We had planned to come to our home the beginning of April but border closure prevented our trip. Had we made the trip, we would have been prevented from accessing our property from Water Street. The point to be made is that there was NO prior notice of this project, NO prior discussion with the abutting property owners, and NO apparent consideration of the impact of this project on access to our property. Had it not been for our neighbors we would have had no idea the impediments were there. Such failure of communication is not something we expect from our Village government. We urge the Village Council and Village Administration to review your policies regarding notice and provide a remedy to this significant lapse.

Signed,

LAKESIDE CAMPGROUND INPUT.

Question 1: 20 campsites in Lakeside Campground?

We feel that to continue with 20 campsites, those sites fronting Water Street should be available for tents only, thus reducing parking problems and congestion on Water Street. If those sites cannot be for tents only, then the available campsites should be reduced to 18, with the 4 sites fronting Water Street reduced to 2 sites and restricted from any RV usage.

Question 2: Change 4 lakefront campsites to communal use

The beach is already public/communal property. We don't see any purpose in eliminating those prime campsites.

One request. The southern-most campsite is frequently expanded by the campers over and into the Water Street right-of-way. This often impedes our access to our driveway. We request that if these sites remain, this particular site be monitored to prevent expansion beyond the campsite boundaries.

Question 3: 20 campsites in Creekside Campground.

Unless required, see no reason to reduce this number.

Question 4: RVs in Lakeside Campground

RVs should be permitted in the Creekside Campground only. Mainly this is necessary because RVs increase the congestion of vehicles when you consider the boat launch and the lack of maneuverable space. If you can't or won't restrict RVs from the Lakeside Campground, limit the spaces available for RVs and conduct stringent control over the hours generators may run. Because generators are annoying to fellow campers and the residences near the campground, there are currently restrictions in place, but in Summer 2019, there was lax enforcement.

Question 5: Power/water in Lakeside.

Since the Lakeside Campground should be limited to tents self-contained campers, and small trailers, there would be no use for either power or water hook-ups. If RVs are allowed, then consistent with our answer to Question 4, the sites where they may park should be limited and restricted. And, to eliminate generator use, power to only those sites could be supplied, assuming that the cost of that electricity is not subsidized by Village taxpayers. There is really no need to supply water to any campsite.

Question 6: Power/water in Creekside.

Wherever RVs will be permitted, we suggest power to only those sites, consistent to the answers to questions 4 and 5. No water.

COPY

To: SILVERTON VILLAGE COUNCIL

WATER STREET IS A 70' WIDE STREET.

WE HAVE NEVER ASKED FOR IT TO BE OPENED UP TO THAT SIZE.

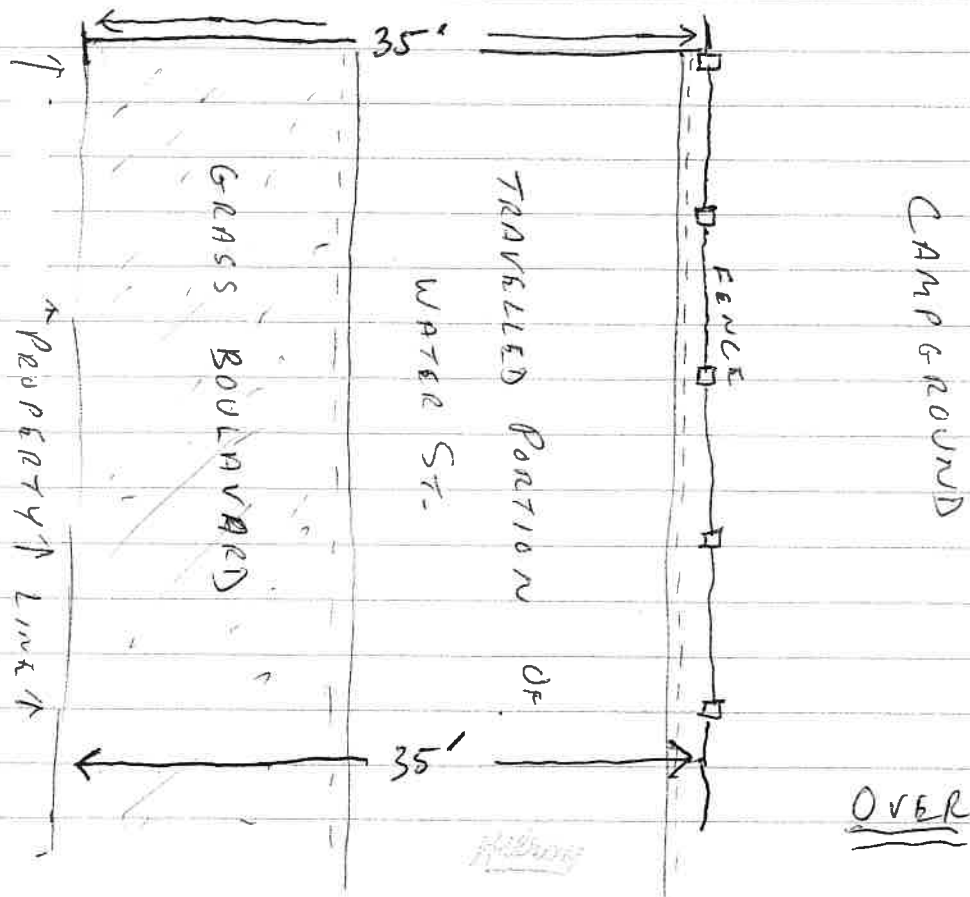
WE ORIGINALLY ASK FOR A BOULVARD ALONG OUR SIDE OF WATER STREET AND FOR THE ROAD TO BE MOVED OVER.

WE ALSO ASKED FOR A FENCE ON THE CAMPGROUND SIDE OF WATER STREET.

THE BOULEVARD NEVER HAPPENED, THE ROAD WASN'T MOVED, AND THEY BUILT THEIR FENCE RIGHT ALONG OUR PROPERTY LINE.

THEN ^{SOME} COUNCIL MEMBERS & SOME STAFF TOLD PEOPLE THAT THEY BUILT THE FENCE BECAUSE WE ASKED FOR IT, BUT NEVER SAID WHERE WE WANTED IT.

HERE IS WHAT WE ARE INSISTING BE DONE WITH WATER ST.



WE BELIEVE THE NEIGHBORS
WILL NEED TO BE CONSULTED, BUT I HOPE THEY WILL AGREE.
WE WILL FIGHT VERY HARD AGAINST ANY PLAN THAT
DOESN'T GIVE US MORE DISTANCE FROM THE CAMPSITES

Village of Silverton Lakeside Campground Input

Questions:

1. We had 20 campsites at the Lakeside Campground: should we have that many in future, or fewer (keeping in mind that we may HAVE TO plan for fewer campsites for various reasons)? *Fewer*
2. We had 4 waterfront campsites: should we plan for waterfront campsites in the future, or should we reserve the shoreline for communal enjoyment?
3. We had 20 campsites in the Creekside Campground: should we have that many in future, or fewer (keeping in mind that we may HAVE TO plan for fewer campsites for various reasons)?
4. Should we continue to allow RVs in the Lakeside Campground, or should we allow them only in Creekside?
5. Should we plan for power and/or water hook-ups to some sites in Lakeside? }
6. Should we plan for power and/or water hook-ups to some sites in Creekside? }
7. Anything else? *Strict noise control + dog control*
8. Other amenities you think we should provide? *Showers,*

Please provide input: by scanning or taking a photo of your input and emailing to: info@silverton.ca OR drop it at the Village office THROUGH THE MAIL SLOT ON SOUTH DOOR OR MAIL it to us at PO BOX 14, Silverton BC V0G 2B0 DEADLINE June 1st, 2020

RECEIVED
May 26/2020

Possible

Lakeside Campground Input

Dear Silverton Residents:

Silverton Municipal Campground is undergoing major changes. We would like to hear from the community how you might like to see it developed for the future. While we cannot invite the public into the current work zone, we invite you to take a look from the outside and share your thoughts with us.

Description: The Campground measures approximately 252' X 145' (roughly the same size as the Ball Field at Dewis Park). The Campground is bounded on three sides by roads (Leadville St., Turner St. and Water St.) and on the fourth side by Slocan Lake. There is a roadway that runs through the middle of the Campground that provides access to washrooms, woodshed, etc. as well as to campsites. Because of the built-in infrastructure, we do not anticipate moving this roadway.

Questions:

1. We had 20 campsites at the Lakeside Campground: should we have that many in future or fewer (keeping in mind that we may HAVE TO plan for fewer campsites for various reasons)?

The campground will have a modest increase M² area due to tree removal and the advantages of having a more or less clean slate for layout of sites. In the circumstances and given the importance of maximizing revenue for the Village, the new layout should have at least 20 sites and possibly a few additional ones if feasible. Water St. access should be preserved in order to maintain vehicle access to as many sites as possible.

2. We had 4 waterfront campsites: should we plan for waterfront campsites in the future or should we reserve the shoreline for communal enjoyment?

The 4 waterfront sites should absolutely be retained. If campers wish to enjoy the waterfront view there is ample foreshore space available due to the lower water levels during camping season. Insofar as recreation on or in the water is concerned, the Village already has an excellent and safe beach available for campers at

Coopers Beach (an arrangement that has worked fine in the past). Waterfront sites should command a significantly higher daily rate and perhaps be time limited to, say, 2 weeks maximum.

3. We had 20 campsites in the Creekside Campground: should we have that many in future or fewer (keeping in mind that we may HAVE TO plan for fewer campsites for various reasons)?

See answer to number 1 above. We should have as many spaces as possible (within reason) at both locations. We have no idea what is implied by the reference to "various reasons" in this question and question 1. It would have been helpful if there had been more specificity in this regard. As matters currently stand, we have difficulty imagining any compelling "reasons" why the number should be reduced.

4. Should we continue to allow RVs in the Lakeside Campground or should we allow them only in Creekside?

They should be allowed in both. As provider of this amenity, the Village should be careful to avoid imposing unnecessary restrictions as they will inevitably drive business away. On the other hand, it may be reasonable to limit the length of RV's in Lakeside, but given the clean slate layout, it may be possible to include a few sites that would accommodate longer RV's for an additional fee.

5. Should we plan for power and/or water hook-ups to some sites in Lakeside?

This is a difficult question to answer in the absence of past revenue and expense info and projections as to future net revenue. The cost of such improvements at Lakeside would probably be prohibitive and impossible to recover in any reasonable timeframe. If indeed the cost of putting in hookups could be recovered fairly quickly through higher user fees it might make sense. Insofar as the existing power & water setup is concerned, campers (including us back in the early 90's) have seemed to manage quite well without hookups. Additional communal water taps and electrical outlets for charging devices (as much as we may disapprove of them on a camping trip!) might make sense. One further comment: has consideration been given to "roughing in" pipe and conduit while the campsite is under reconstruction with a view to future installation of underground services to individual sites?

6. Should we plan for power and/or water hook-ups to some sites in Creekside?

The same qualification re lack of fiscal data applies to this question. However, it seems that this might be able to be done at a more reasonable cost and might be

possible. If such hookups were provided, the daily rate should be increased sufficiently to ensure that in addition to ongoing operating profitability, there would be medium term recovery of the capital costs involved.

7. Anything else?

Campers do not mind being in relatively close proximity to other campers. Often more than one group go camping together and where possible, prefer to set up a "compound" of tents for family or friends in their group. This should be kept in mind when laying out the new sites. There are obviously reasonable limits on how close sites should generally be to their neighbours, but the overriding principle in the redesign must be to net positive revenue. The fixed costs of campground operation do not increase (or decrease) based upon campsite density. In addition, the visitors' financial support flowing to local businesses is directly proportional to the number of sites we can provide. In this context alone, any reduction in the number of spaces is not acceptable. Each year that goes by sees increased demand for camping spots in BC.

8. Other amenities you think we should provide?

None to the campground, provided the new layout has basic landscaping. As for the lakeside campground area in general, an extension of the boat launch concrete pad for low water boat trailer access would be a good idea both for campers and residents.

Thank you.

Lake side

June 1 / 2020

Campground

- 1) Yes maintain 20 sites
 - * if possible provide provide sites (or some) with full / partial service
 - * No restrictions to full service r.v.'s
- 2) would be nice to have a fish cleaning area set up
- 3) Clean up rocks from beach area to make it more attractive & friendlier to use.
- 4) Plant leaf trees which put down top roots & provide excellent shade
- 5) Continue to have late front sites →



Creekside Campground

- Provide full ^{RV} service to at least 6 sites
- provide elec/water to remaining sites
- move Shower/washrooms to portion of curling rink - will enable grant potential & improve service

By increasing the potential at this campsite it would be the only location on Sloan Lake to provide full service for RV's a huge bonus and Revenue generation for the Village!!

Hi

Please find our responses to your survey below:

1. Fewer sites would be better
2. Reserve the shoreline for communal use, remove these 4 sites.
3. Fewer might be better, it will separate the sites which may provide a better experience
4. RV's 21 feet and under should be allowed at Lakeside, larger RV's should be at creek side.
5. Some sites at Lakeside should have water and power
6. The same as above for Creekside
7. Plant trees between sites
8. Provide a Sani dump at Creekside

Thank you for the opportunity to provide input.

Silverton Campground Survey Answers

1. We had 20 campsites at the Lakeside Campground: should we have that many in future, or fewer (keeping in mind that we may HAVE TO plan for fewer campsites for various reasons)?
 - a. This should be decided by a professional that is qualified to plan such a space

2. We had 4 waterfront campsites: should we plan for waterfront campsites in the future, or should we reserve the shoreline for communal enjoyment?
 - a. Leave as campsites. There is plenty of shoreline for folks

3. We had 20 campsites in the Creekside Campground: should we have that many in future, or fewer (keeping in mind that we may HAVE TO plan for fewer campsites for various reasons)?
 - a. This should be decided by a professional that is qualified to plan such a space

4. Should we continue to allow RVs in the Lakeside Campground, or should we allow them only in Creekside?
 - a. RVs should mainly be booked into Creekside

5. Should we plan for power and/or water hook-ups to some sites in Lakeside?
 - a. Water no – power, maybe?

6. Should we plan for power and/or water hook-ups to some sites in Creekside?
 - a. Yes

7. Anything else?

a. Wifi should be offered at both sites

8. Other amenities you think we should provide?

a. Wifi (see 7)

To: Silverton Village Council
Re: Lakeside Campground Input
Date: May 30, 2020

We were shocked and disappointed to see the Lakeside Campground recently. We understand many of the trees were rotten and an accident that could have been devastating occurred. Was it necessary to remove so many trees, and were residents invited in the decision-making process before this was done?

In any case, we would like to respond to the Council's request for input after the fact. We believe many of the campers in the lakeside campground visited our particular campground because of the natural environment and shade of the trees. With such a severe change, we are not sure Silverton will be targeting the same type of traveler to camp there. Because there is now very little shade, the campground would most likely be best suited to RVs with AC. Therefore, some power and water hook-ups would be needed. The Creekside campground may now be better suited to both tenters and RVs.

As for the number of sites, not being RV campers, and not knowing how much space is normally provided for each, we cannot suggest numbers. Also, as noted in both questions 1 and 3, 'we may HAVE TO plan for fewer campsites for various reasons', not sure why we are even being asked.

Regarding question 2, do the 4 waterfront campsites not already allow for communal shoreline enjoyment? By continuing to offer these sites, are we limiting residents from using the shoreline? Does having these sights make the shoreline use exclusive to those campers only?

Anything else? Keep it green! Plant trees, gardens, shrubs, and let's hope they grow fast.

Lakeside Campground Input

Dear Silverton Residents:

Silverton Municipal Campground is undergoing major changes. We would like to hear from the community how you might like to see it developed for the future. While we cannot invite the public into the current work zone, we invite you to take a look from the outside and share your thoughts with us.

Description: The Campground measures approximately 252' X 145' (roughly the same size as the Ball Field at Dewis Park). The Campground is bounded on three sides by roads (Leadville St., Turner St. and Water St.) and on the fourth side by Slocan Lake. There is a roadway that runs through the middle of the Campground, that provides access to washrooms, woodshed, etc. as well as to campsites. Because of the built-in infrastructure, we do not anticipate moving this roadway.

Questions:

1. We had 20 campsites at the Lakeside Campground: should we have that many in future or fewer (keeping in mind that we may HAVE TO plan for fewer campsites for various reasons)?

There is no need to plan for fewer campsites. We should plan to have as many sites as possible. The more revenue the better. With good site planning every square foot needs to be maximized.

2. We had 4 waterfront campsites: should we plan for waterfront campsites in the future or should we reserve the shoreline for communal enjoyment?

Yes waterfront campsites should be planned for. The fees for the waterfront should be more. Allow for larger RVs to use the waterfront by charging more per site. There are other places in the village for communal enjoyment ie: Coopers beach, The slip(day park), mouth of Silverton Creek, the whole shoreline is public, for communal enjoyment.

3. We had 20 campsites in the Creekside Campground: should we have that many in future or fewer (keeping in mind that we may HAVE TO plan for fewer campsites for various reasons)?

Yes we should keep to the same number or increase if possible.

4. Should we continue to allow RVs in the Lakeside Campground or should we allow them only in Creekside?

Yes we should continue to allow RVs in the Lakeside Campground

5. Should we plan for power and/or water hook-ups to some sites in Lakeside?

Yes planning for power and/or water should be planned for. But that depends on how much spare money we have to spend.

6. Should we plan for power and/or water hook-ups to some sites in Creekside?

Yes planning for power and/or water hooks should be planned for. But that still depends on how much spare money we have to spend.

7. Anything else?

I would like to see what the revenues and expenses have been for the Campsite (lakefront and Creekside) for the last number of years. That could answer some of these questions. The campsite does not have to always be making a big profit, small losses are acceptable, the campers do provide a financial benefit to the local economy whether it be the local stores or real estate.

8. Other amenities you think we should provide?

The Lakeside campground is a prime piece of real estate. If sold would provide funds to install the infrastructure in the Creekside campsite or build a new campsite on one of the lands within the Village ie: (Slip Day Park or Dewis Memorial Park). Plus provide funds for other amenities or needed infrastructure within the Village for many years.

Lakeside Campground Input

Dear Silverton Residents:

Silverton Municipal Campground is undergoing major changes. We would like to hear from the community how you might like to see it developed for the future.

While we cannot invite the public into the current work zone, we invite you to take a look from the outside and share your thoughts with us.

Description: The Campground measures approximately 252' X 145' (roughly the same size as the Ball Field at Dewis Park). The Campground is bounded on three sides by roads (Leadville St., Turner St. and Water St.) and on the fourth side by Slocan Lake. There is a roadway that runs through the middle of the Campground, that provides access to washrooms, woodshed, etc. as well as to campsites. Because of the built-in infrastructure, we do not anticipate moving this roadway.

Questions:

1. We had 20 campsites at the Lakeside Campground: should we have that many in future or fewer (keeping in mind that we may HAVE TO plan for fewer campsites for various reasons)?

I think we should have as many sites as possible without making to crowded.

2. We had 4 waterfront campsites: should we plan for waterfront campsites in the future or should we reserve the shoreline for communal enjoyment?

I think we should upgrade the lake front with more campsites and better beach access for people.

3. We had 20 campsites in the Creekside Campground: should we have that many in future or fewer (keeping in mind that we may HAVE TO plan for fewer campsites for various reasons)?

I think the creek side is good at 20 sites, unless you develop the field into more sites.

4. Should we continue to allow RVs in the Lakeside Campground or should we allow them only in Creekside?

Yes allow RVs in the Lakeside Campground it is a campground.

5. Should we plan for power and/or water hook-ups to some sites in Lakeside?

Yes we should plan for power and water.

6. Should we plan for power and/or water hook-ups to some sites in Creekside?

Yes should plan as well. But the lakeside should take priority for power and water hook-ups.

7. Anything else?

8. Other amenities you think we should provide?

- 1) I think 20 campsites is plenty
- 2) keep the 4 waterfront We do not need a shoreline for communal enjoyment as we have 2 beaches that don't get used enough.
- 3) keep the 20 for large events and large units.
- 4) yes rvs should be allowed at Lake side campground.
- 5) yes power and water should be allowed but no power and water at Lake side sites.
- 6) yes should be about half the sites.
- 7) no
- 8) a sani dump at creek side

Sent from my iPad=

1. 20 sites is enough

2. 4 water front is good

3. I would keep the 20 sites for larger RV and large events 4. Yes RV should be allowed 5. No power and water at lake side should be put above 6. Yes 7.

8. It would be nice to have sani dump at creek side with a fee and keep it locked

Sent from my iPad=

1. four fewer (see Q#2), if no waterfront sites
2. reserve waterfront for public picnic sites
3. okay with 20 at Creekside
4. limit RV length (say 20 ft?) in Lakeside, okay with any length (within reason) at Creekside
5. okay to provide nearby to RV "type" sites, at extra fee. might prevent RV's from using their generator
6. okay, at extra fee
7. a) fix/replace power washer so boaters can clean boats & trailers before launching. Milfoil and zebra mussels are a series threat.
7. b) charge a launch fee, which can be voluntary and minimal (say \$5?) at first and eventually mandatory. Signage to explain fee pays for ramp, dock, water breaker construction and maintenance.

Thanks for asking for our input, but we're sorry to see so MANY trees taken out - surely they weren't all hazardous? Looking at the stump ends most seem very sound.

Here is our input for the campground sites of the future.

1. The 20 lakesite should be reduced to ensure physical distancing is adhered to.
2. Leave the existing 4 waterfront sites as it is the perfect vantage point and draw to visitors to capture the beauty of the Valhallas and how special the Valley is.
3. The 20 creekside sites are too crowded together which make it difficult for physical distancing, unless some barriers were installed.
4. The Creekside campsite should remain for RV sites and no RV's on lakesites
5. Electrical hookup would provide convenience in a few yes ad a water source/pump for campers
6. Yes, knowing many people who RV electrical hook up is preferred over water
7. We prefer the campground not turn into an RV park as in the cities
8. Other amenities are clearly marked recycling containers/bear proof garbage



Village of Silverton

Lakeside Campground Input

Dear Silverton Residents:

Silverton Municipal Campground is undergoing major changes. We would like to hear from the community how you might like to see it developed for the future. While we cannot invite the public into the current work zone, we invite you to take a look from the outside and share your thoughts with us.

Description: The Campground measures approximately 252' X 145' (roughly the same size as the Ball Field at Dewis Park). The Campground is bounded on three sides by roads (Leadville St., Turner St. and Water St.) and on the fourth side by Slocan Lake. There is a roadway that runs through the middle of the Campground, that provides access to washrooms, woodshed, etc. as well as to campsites. Because of the built-in infrastructure, we do not anticipate moving this roadway.

Questions:

1. We had 20 campsites at the Lakeside Campground: should we have that many in future, or fewer (keeping in mind that we may HAVE TO plan for fewer campsites for various reasons)?
I BELIEVE 13 OR 14 WOULD FIT NICELY WITHOUT CROWDING EACH OTHER
2. We had 4 waterfront campsites: should we plan for waterfront campsites in the future, or should we reserve the shoreline for communal enjoyment?
YES
ALTHOUGH THEY ARE LOVELY SITES, SOME FOLKS DON'T LIKE WATCHING THEM.
THE FEELING THAT THE PEOPLE IN THE SITES ARE
3. We had 20 campsites in the Creekside Campground: should we have that many in future, or fewer (keeping in mind that we may HAVE TO plan for fewer campsites for various reasons)?
LETS LEAVE IT AS IS FOR NOW, BUT LETS SURVEY THE CAMPER'S WHO USE IT.
4. Should we continue to allow RVs in the Lakeside Campground, or should we allow them only in Creekside?
SMALL RV'S IN LAKESIDE ARE OKAY
5. Should we plan for power and/or water hook-ups to some sites in Lakeside?
NO: THIS WOULD ENTICE MORE LARGE RIGS
6. Should we plan for power and/or water hook-ups to some sites in Creekside?
POSSIBLY, BUT I WOULD WANT MORE INFO AND SOME KIND OF PLAN TO LOOK AT FIRST.
7. Anything else?
YES, LETS TALK ABOUT WHAT KIND OF TREES WE SHOULD PLANT, MAYBE THINK OUTSIDE OF THE BOX.
8. Other amenities you think we should provide?

Please provide input: by scanning or taking a photo of your input and emailing to: info@silverton.ca

OR drop it at the Village office THROUGH THE MAIL SLOT ON SOUTH DOOR
OR MAIL it to us at PO BOX 14, Silverton BC V0G 2B0

DEADLINE June 1st, 2020



Village of Silverton Lakeside Campground Input

Dear Silverton Residents:

Silverton Municipal Campground is undergoing major changes. We would like to hear from the community how you might like to see it developed for the future. While we cannot invite the public into the current work zone, we invite you to take a look from the outside and share your thoughts with us.

Description: The Campground measures approximately 252' X 145' (roughly the same size as the Ball Field at Dewis Park). The Campground is bounded on three sides by roads (Leadville St., Turner St. and Water St.) and on the fourth side by Slocan Lake. There is a roadway that runs through the middle of the Campground, that provides access to washrooms, woodshed, etc. as well as to campsites. Because of the built-in infrastructure, we do not anticipate moving this roadway.

Questions:

1. We had 20 campsites at the Lakeside Campground: should we have that many in future, or fewer (keeping in mind that we may HAVE TO plan for fewer campsites for various reasons)?
20 campsites is enough
2. We had 4 waterfront campsites: should we plan for waterfront campsites in the future, or should we reserve the shoreline for communal enjoyment? *4 waterfront Campsites*
3. We had 20 campsites in the Creekside Campground: should we have that many in future, or fewer (keeping in mind that we may HAVE TO plan for fewer campsites for various reasons)?
More than 20 Campsites in the future
4. Should we continue to allow RVs in the Lakeside Campground, or should we allow them only in Creekside?
Smaller RV in Lakeside the rest in Creekside would allow for larger RV's
5. Should we plan for power and/or water hook-ups to some sites in Lakeside?
Some water + power hookups at Lakeside
6. Should we plan for power and/or water hook-ups to some sites in Creekside?
Creekside Majority of water + Power Hookups
7. Anything else?
8. Other amenities you think we should provide?
Plant more trees with strong root system. Residuals (Leaky) Area for RV Sewage disposal like they have in Dewis

Please provide input: by scanning or taking a photo of your input and emailing to: info@silverton.ca

OR drop it at the Village office THROUGH THE MAIL SLOT ON SOUTH DOOR
OR MAIL it to us at PO BOX 14, Silverton BC V0G 2B0

DEADLINE June 1st, 2020



Village of Silverton Lakeside Campground Input

Dear Silverton Residents:

Silverton Municipal Campground is undergoing major changes. We would like to hear from the community how you might like to see it developed for the future. While we cannot invite the public into the current work zone, we invite you to take a look from the outside and share your thoughts with us.

Description: The Campground measures approximately 252' X 145' (roughly the same size as the Ball Field at Dewis Park). The Campground is bounded on three sides by roads (Leadville St., Turner St. and Water St.) and on the fourth side by Slocan Lake. There is a roadway that runs through the middle of the Campground, that provides access to washrooms, woodshed, etc. as well as to campsites. Because of the built-in infrastructure, we do not anticipate moving this roadway.

Questions:

1. We had 20 campsites at the Lakeside Campground: should we have that many in future, or fewer (keeping in mind that we may HAVE TO plan for fewer campsites for various reasons)?
2. We had 4 waterfront campsites: should we plan for waterfront campsites in the future, or should we reserve the shoreline for communal enjoyment? *OK for fewer during covid days* *maybe keep 2 shoreline sites possibly.*
3. We had 20 campsites in the Creekside Campground: should we have that many in future, or fewer (keeping in mind that we may HAVE TO plan for fewer campsites for various reasons)? *OK for fewer during covid days*
4. Should we continue to allow RVs in the Lakeside Campground, or should we allow them only in Creekside? *RVs o.k. in both*
5. Should we plan for power and/or water hook-ups to some sites in Lakeside? *yes*
6. Should we plan for power and/or water hook-ups to some sites in Creekside? *yes*
7. Anything else? *hope to plant nice trees & barriers betw campsites w lake*
8. Other amenities you think we should provide? *since its so exposed*

Please provide input: by scanning or taking a photo of your input and emailing to: info@silverton.ca

OR drop it at the Village office **THROUGH THE MAIL SLOT ON SOUTH DOOR**
OR MAIL it to us at **PO BOX 14, Silverton BC V0G 2B0**

DEADLINE June 1st, 2020



Village of Silverton

Lakeside Campground Input

Dear Silverton Residents:

Silverton Municipal Campground is undergoing major changes. We would like to hear from the community how you might like to see it developed for the future. While we cannot invite the public into the current work zone, we invite you to take a look from the outside and share your thoughts with us.

Description: The Campground measures approximately 252' X 145' (roughly the same size as the Ball Field at Dewis Park). The Campground is bounded on three sides by roads (Leadville St., Turner St. and Water St.) and on the fourth side by Slocan Lake. There is a roadway that runs through the middle of the Campground, that provides access to washrooms, woodshed, etc. as well as to campsites. Because of the built-in infrastructure, we do not anticipate moving this roadway.

Questions:

1. We had 20 campsites at the Lakeside Campground: should we have that many in future or fewer (keeping in mind that we may HAVE TO plan for fewer campsites for various reasons)?
2. We had 4 waterfront campsites: should we plan for waterfront campsites in the future or should we reserve the shoreline for communal enjoyment?
3. We had 20 campsites in the Creekside Campground: should we have that many in future or fewer (keeping in mind that we may HAVE TO plan for fewer campsites for various reasons)?
4. Should we continue to allow RVs in the Lakeside Campground, or should we allow them only in Creekside? *Allow RVs in both*
5. Should we plan for power and/or water hook-ups to some sites in Lakeside? *Yes*
6. Should we plan for power and/or water hook-ups to some sites in Creekside? *Yes*
7. Anything else? *Keep campsites family orientated
Enforce strict by laws → quiet times*
8. Other amenities you think we should provide?

Please provide input: by scanning or taking a photo of your input and emailing to: info@silverton.ca

OR drop it at the Village office **THROUGH THE MAIL SLOT ON SOUTH DOOR**
OR MAIL it to us at **PO BOX 14, Silverton BC V0G 2B0**

DEADLINE June 1st, 2020



Village of Silverton

Lakeside Campground Input

Dear Silverton Residents:

Silverton Municipal Campground is undergoing major changes. We would like to hear from the community how you might like to see it developed for the future. While we cannot invite the public into the current work zone, we invite you to take a look from the outside and share your thoughts with us.

Description: The Campground measures approximately 252' X 145' (roughly the same size as the Ball Field at Dewis Park). The Campground is bounded on three sides by roads (Leadville St., Turner St. and Water St.) and on the fourth side by Slocan Lake. There is a roadway that runs through the middle of the Campground, that provides access to washrooms, woodshed, etc. as well as to campsites. Because of the built-in infrastructure, we do not anticipate moving this roadway.

Questions:

1. We had 20 campsites at the Lakeside Campground: should we have that many in future, or fewer (keeping in mind that we may HAVE TO plan for fewer campsites for various reasons)?
2. We had 4 waterfront campsites: should we plan for waterfront campsites in the future, or should we reserve the shoreline for communal enjoyment?
3. We had 20 campsites in the Creekside Campground: should we have that many in future, or fewer (keeping in mind that we may HAVE TO plan for fewer campsites for various reasons)?
4. Should we continue to allow RVs in the Lakeside Campground, or should we allow them only in Creekside? *Allow RVs in both*
5. Should we plan for power and/or water hook-ups to some sites in Lakeside? *Yes*
6. Should we plan for power and/or water hook-ups to some sites in Creekside? *Yes*
7. Anything else? *Keep campsites family orientated
Enforce strict by laws → quiet times*
8. Other amenities you think we should provide?

Please provide input: by scanning or taking a photo of your input and emailing to: info@silverton.ca

OR drop it at the **Village** office **THROUGH THE MAIL SLOT ON SOUTH DOOR**
OR MAIL it to us at **PO BOX 14, Silverton BC V0G 2B0**

DEADLINE June 1st, 2020



Village of Silverton

Lakeside Campground Input

Dear Silverton Residents:

Silverton Municipal Campground is undergoing major changes. We would like to hear from the community how you might like to see it developed for the future. While we cannot invite the public into the current work zone, we invite you to take a look from the outside and share your thoughts with us.

Description: The Campground measures approximately 252' X 145' (roughly the same size as the Ball Field at Dewis Park). The Campground is bounded on three sides by roads (Leadville St., Turner St. and Water St.) and on the fourth side by Slocan Lake. There is a roadway that runs through the middle of the Campground, that provides access to washrooms, woodshed, etc. as well as to campsites. Because of the built-in infrastructure, we do not anticipate moving this roadway.

Questions:

1. We had 20 campsites at the Lakeside Campground: should we have that many in future, or fewer (keeping in mind that we may HAVE TO plan for fewer campsites for various reasons)?
2. We had 4 waterfront campsites: should we plan for waterfront campsites in the future, or should we reserve the shoreline for communal enjoyment?
3. We had 20 campsites in the Creekside Campground: should we have that many in future, or fewer (keeping in mind that we may HAVE TO plan for fewer campsites for various reasons)?
4. Should we continue to allow RVs in the Lakeside Campground, or should we allow them only in Creekside?
5. Should we plan for power and/or water hook-ups to some sites in Lakeside?
6. Should we plan for power and/or water hook-ups to some sites in Creekside?
7. Anything else?
8. Other amenities you think we should provide?

Please provide input: by scanning or taking a photo of your input and emailing to: info@silverton.ca

OR drop it at the Village office **THROUGH THE MAIL SLOT ON SOUTH DOOR**
OR MAIL it to us at **PO BOX 14, Silverton BC V0G 2B0**

DEADLINE June 1st, 2020

*

- ① 20 is OK if they are single family sites. If you are going to allow 1-2 families per site 15 MAX.
- ② Waterfront campsites are at a premium, I think they should be left (more fees as well) but I think the waterfront should include a string of buoys to keep the boats off that shoreline + a ~~wharf~~^{wharf} or something like at Copper's Beach, so the kids have something to dive + jump off.
- ③ Creekside should be the same 20 single family sites + less (15) is multi family (+2)
- ④ RV's should be allowed at both campsites as long as the site is adequate for the size of the RV. If no power + generators are allowed there should be strict guidelines as when the can be used ie breakfast / dinner but not all day.
- ⑤ Power + water at lakeside ~~sites~~^{sites} would be good as long as the cost can be recouped by the fees collected.
- ⑥ Same as #5
- ⑦ would like to see a fence or hedge across Hunter St. to block off campsite noise + dust from traffic + just to keep it from spilling out onto the road / corner I know there is a septic system there so perhaps a fence would be better.

making this corner & area sometimes dangerous due to visibility & ~~excess~~ ^{excess} vehicles & trailers on the street.

⑦ Campsites should be able to contain the campers & their vehicles on their sites & maybe only one family per site.

- would like to see a good job done of putting calcium chloride down on the entire entrance & road as the dust from the traffic in & out is huge.

Here is our input for the campsite. My wife and I had used the Silverton campsite in the two years prior to moving to the village in 2018 so we have personal experience using the site. In addition we consulted with our son and his girlfriend who have used the campsite on at least four occasions also, and we used this joint experience to address the questions.

Question #1: 20 is about the right number we all agreed, but we're not sure what the "various reasons" are apart from Covid 19. This phrase is used twice – are there more reasons than this? Knowing what any other reasons might be could affect this answer.

Question #2: Four waterfront sites seemed to work when we were there – more might be too 'squeezed'. We all agreed there was no need to make the shore available for public use, as there is already a large public beach adjacent. And, the present lakefront sites generate more money because they command a premium fee.

QUESTION #3: We felt that fewer sites might be better at Creekside as currently they are not well defined. See also next question.

Question #4: Everyone agreed the Lakeside campground should be tents only and RVs should be in Creekside only. There really isn't room for RVs in Lakeside and tent-only sites are more attractive to tent campers.

Question #5: No power/water hook-ups in Lakeside – tents only.

Question #6: Power/water hookups OK for Creekside – and RVs.

Question #7 and 8: An option might be to include a washer and dryer.

The virtue of the current campsite we all felt was its simplicity, relatively low cost, and its good showers. No need to add more. And previously the trees really were lovely too 😞.

I hope this is helpful.



Village of Silverton

Lakeside Campground Input

Dear Silverton Residents:

Silverton Municipal Campground is undergoing major changes. We would like to hear from the community how you might like to see it developed for the future. While we cannot invite the public into the current work zone, we invite you to take a look from the outside and share your thoughts with us.

Description: The Campground measures approximately 252' X 145' (roughly the same size as the Ball Field at Dewis Park). The Campground is bounded on three sides by roads (Leadville St., Turner St. and Water St.) and on the fourth side by Slocan Lake. There is a roadway that runs through the middle of the Campground, that provides access to washrooms, woodshed, etc. as well as to campsites. Because of the built-in infrastructure, we do not anticipate moving this roadway.

Questions:

- Keep all 20 if at all possible*
1. We had 20 campsites at the Lakeside Campground: should we have that many in future, or fewer (keeping in mind that we may HAVE TO plan for fewer campsites for various reasons)?
 2. We had 4 waterfront campsites: should we plan for waterfront campsites in the future, or should we reserve the shoreline for communal enjoyment? *Keep these as campsites we can up-sell them*
 3. We had 20 campsites in the Creekside Campground: should we have that many in future, or fewer (keeping in mind that we may HAVE TO plan for fewer campsites for various reasons)? *Keep all 20 if possible*
 4. Should we continue to allow RVs in the Lakeside Campground, or should we allow them only in Creekside? *No* *yes*
 5. Should we plan for power and/or water hook-ups to some sites in Lakeside?
 6. Should we plan for power and/or water hook-ups to some sites in Creekside?
 7. Anything else?
 8. Other amenities you think we should provide?

Please provide input: by scanning or taking a photo of your input and emailing to: info@silverton.ca

OR drop it at the Village office **THROUGH THE MAIL SLOT ON SOUTH DOOR**

OR MAIL it to us at **PO BOX 14, Silverton BC V0G 2B0**

DEADLINE June 1st, 2020



Village of Silverton

Lakeside Campground Input

Dear Silverton Residents:

Silverton Municipal Campground is undergoing major changes. We would like to hear from the community how you might like to see it developed for the future. While we cannot invite the public into the current work zone, we invite you to take a look from the outside and share your thoughts with us.

Description: The Campground measures approximately 252' X 145' (roughly the same size as the Ball Field at Dewis Park). The Campground is bounded on three sides by roads (Leadville St., Turner St. and Water St.) and on the fourth side by Slocan Lake. There is a roadway that runs through the middle of the Campground, that provides access to washrooms, woodshed, etc. as well as to campsites. Because of the built-in infrastructure, we do not anticipate moving this roadway.

Questions:

1. We had 20 campsites at the Lakeside Campground: should we have that many in future, or fewer (keeping in mind that we may HAVE TO plan for fewer campsites for various reasons)?
2. We had 4 waterfront campsites: should we plan for waterfront campsites in the future, or should we reserve the shoreline for communal enjoyment?
3. We had 20 campsites in the Creekside Campground: should we have that many in future, or fewer (keeping in mind that we may HAVE TO plan for fewer campsites for various reasons)?
4. Should we continue to allow RVs in the Lakeside Campground, or should we allow them only in Creekside?
5. Should we plan for power and/or water hook-ups to some sites in Lakeside? *no*
6. Should we plan for power and/or water hook-ups to some sites in Creekside? *no*
7. Anything else?
8. Other amenities you think we should provide? *showers*

Please provide input: by scanning or taking a photo of your input and emailing to: info@silverton.ca

OR drop it at the Village office **THROUGH THE MAIL SLOT ON SOUTH DOOR**

OR MAIL it to us at **PO BOX 14, Silverton BC V0G 2B0**

DEADLINE June 1st, 2020

Re: Lakeside Campground Input

Further to our notes to you re Lakeside Campground Input.

Water street. Please close that street and include that street as part of the Village Campground. Then the Village can use that block as you wish for the campground. I spoke to [redacted] re closing that street and when she was Mayor, she and council tried to close the street and were unable. I should have closed the street when I was on Council, but there was no problem at that time.

During my time on Council we did close the following:

The lane south of 5th Street from Turner to the Lake

Hunter street from 6th street north to the Lake

Hunter street from 3rd street south to the Lake

The lane west of Hunter street from 4th Street south [redacted], tht balance of that lane is park.

The lane in Block 38 from the United Church [redacted] west to Alpha Street.

We also did the paper work and motions to close Leadville Street next to Dewis Park from Lake Ave to Hume lane, BUT somehow this never got registered, so it is still Leadville Street.

So if we got these streets & lanes closed, hopefully you can do the same for Lake Street and get rid of any more problems. ??

Council:

Re: Lakeside Campground Input

1. 20 campsites at Lakeside or as many as you can.
2. I always thought it was 5 or 6 sites as many as you can. The lake side at the campground is all rocks and not good for communal enjoyment. You already have good swimming at Turner St & 6th Street.
3. 20 campsites at Creekside or as many as possible.
4. Continue to have RV's at Lakeside – Creekside was/is for overflow and overlength campers.
5. Yes – plan for power and water and sewer hook-up for at least some and allow for dumping for all other campers.
6. Yes – plan for all three hook-ups for as many as possible with the rest for central dumping.
7. PLEASE have someone competent and experienced to plan out a design for both sites. The old site was designed for Model T cars & tents by someone with good intentions and few smarts.
8. Please retain the Bocci Pits and other space at Creekside for July 1st activities. There isn't any other space in Silverton large enough for all the events. The odd year we have even more events but lack volunteers.

Thank you for your attention.

May 28th, 2020

Village of Silverton

Camp ground questions

- 1.) If financially , it works, I would have a fewer campsites at the Lakeside Campground. This would allow for, I think, a more enjoyable stay and desire to camp there.
- 2.) Yes we should keep the water front campsites.
- 3.) I think 20 campsites in the Creekside Campground is great. It allows family gathering to camp in a close proximity.
- 4.) We should allow RVs in the Lakeside Campground.
- 5-6.) Yes we should plan for power and water hook-ups in both Campgrounds.
- 7.) I would like to see 1 or 2 shelters with room for at least 6-8 picnic tables and some sort of fireplace. Preferably with a view of the lake somewhere in the Village. Perhaps it could be have doors that could be closed against the wind and allow for it to be locked up if needed.
- 8.) ?

Village of Silverton Campground Input

We definitely need the Campground for revenue. Most residents are not aware of the campground layout especially since the trees have been removed. They not have a professional map or 3 plans and present them at a town hall meeting.

Keep the water front campsites.

The community has Coopers beach and the slips day park which is used extensively in the summer and could use some care as well as many more picnic tables.

Space permitting R.V.s should be allowed in lakeshore campground. Power in both campsites would be an asset.

Remove dead trees in Day Park.



Village of Silverton Lakeside Campground Input

Dear Silverton Residents:

Silverton Municipal Campground is undergoing major changes. We would like to hear from the community how you might like to see it developed for the future. While we cannot invite the public into the current work zone, we invite you to take a look from the outside and share your thoughts with us.

Description: The Campground measures approximately 252' X 145' (roughly the same size as the Ball Field at Dewis Park). The Campground is bounded on three sides by roads (Leadville St., Turner St. and Water St.) and on the fourth side by Slocan Lake. There is a roadway that runs through the middle of the Campground, that provides access to washrooms, woodshed, etc. as well as to campsites. Because of the built-in infrastructure, we do not anticipate moving this roadway.

Questions:

1. We had 20 campsites at the Lakeside Campground: should we have that many in future, or fewer (keeping in mind that we may HAVE TO plan for fewer campsites for various reasons)?
* 18 CAMPSITES? OR KEEP ALL 20.
2. We had 4 waterfront campsites: should we plan for waterfront campsites in the future, or should we reserve the shoreline for communal enjoyment?
* KEEP 2 CAMPSITES OR ALL 4 WATERFRONT.
3. We had 20 campsites in the Creekside Campground: should we have that many in future, or fewer (keeping in mind that we may HAVE TO plan for fewer campsites for various reasons)?
* 16 SITES ALLOWS FOR A BIT MORE INDIVIDUAL SPACE.
4. Should we continue to allow RVs in the Lakeside Campground, or should we allow them only in Creekside?
RV'S ONLY IN CREEKSIDE / SMALLER TENT TRAILERS + TENTS ONLY @ LAKESIDE CAMPGND.
5. Should we plan for power and/or water hook-ups to some sites in Lakeside? YES, BOTH
6. Should we plan for power and/or water hook-ups to some sites in Creekside? YES, BOTH
7. Anything else? A FEW COMMUNITY PICNIC TABLES @ LAKE FRONT AREA? BY THE LAKE
8. Other amenities you think we should provide? SMALL WATER PARK FOR THE "KIDS".

Please provide input: by scanning or taking a photo of your input and emailing to: info@silverton.ca

OR drop it at the Village office THROUGH THE MAIL SLOT ON SOUTH DOOR

OR MAIL it to us at PO BOX 14, Silverton BC V0G 2B0

DEADLINE June 1st, 2020

1. We can put 4 more sites in the Lakeside Campground. The revenue of these sites is a no brainer.
2. We have 5 waterfront campsites. They make the most revenue, so keep them for goodness sakes!
We have Cooper's Beach and the Day Park Beach for communal enjoyment.
3. Keep the 20 campsites in the Creekside Campground and use the ball field to add to the enjoyment of these sites.
4. RV's have to be allowed in the Lakeside Campground.
5. Power and water should be in the Lakeside 5 waterfront campsites.
6. No power or water to the Creekside campsites.
7. Tenting sites at the Day Park.
8. Increase the size or update the washrooms at the Creekside Campground.

The campgrounds are a huge source of revenue for Silverton and enjoyment for people who have been coming here for years. Many people who have come here for years are now buying properties here. It's always been a destination for many people, make it as enjoyable as we can.

Thank you for your recent communication pertaining to Silverton Lakeside, and seeking residents views.

1. 20 campsites at Lakeside are adequate 2. Keep campsites (we already have two shoreline) 3. 20 campsites at Creekside are adequate 4. RV's should be allowed anywhere 5. Leave as is 6. Leave as is 7. Prune trees on campsite properly, ENFORCE DOG LEASH RULES 8. No other amenities required, keep campsites simple& natural. A professional landscape on Lakeside campground

Thank you for your recent communication pertaining to Silverton Lakeside, and seeking residents views.

1. 20 campsites at Lakeside are adequate
2. Keep campsites (we already have two shoreline)
3. 20 campsites at Creekside are adequate

1

4. RV's should be allowed anywhere
5. Leave as is
6. Leave as is
7. Prune trees on campsite properly, ENFORCE DOG LEASH RULES
8. No other amenities required, keep campsites simple& natural. A professional landscape on Lakeside campground



Village of Silverton Lakeside Campground Input

Dear Silverton Residents:

Silverton Municipal Campground is undergoing major changes. We would like to hear from the community how you might like to see it developed for the future. While we cannot invite the public into the current work zone, we invite you to take a look from the outside and share your thoughts with us.

Description: The Campground measures approximately 252' X 145' (roughly the same size as the Ball Field at Dewis Park). The Campground is bounded on three sides by roads (Leadville St., Turner St. and Water St.) and on the fourth side by Slocan Lake. There is a roadway that runs through the middle of the Campground, that provides access to washrooms, woodshed, etc. as well as to campsites. Because of the built-in infrastructure, we do not anticipate moving this roadway.

Questions:

1. We had 20 campsites at the Lakeside Campground: should we have that many in future, or fewer (keeping in mind that we may HAVE TO plan for fewer campsites for various reasons)?
Keep as many as possible
2. We had 4 waterfront campsites: should we plan for waterfront campsites in the future, or should we reserve the shoreline for communal enjoyment?
Two on the waterfront with the priority use be Handicapped, for these
3. We had 20 campsites in the Creekside Campground: should we have that many in future, or fewer (keeping in mind that we may HAVE TO plan for fewer campsites for various reasons)?
Keep as many as possible
4. Should we continue to allow RVs in the Lakeside Campground, or should we allow them only in Creekside? *Yes, allowed at either site. Usually Seniors*
5. Should we plan for power and/or water hook-ups to some sites in Lakeside? *Yes, 50%*
6. Should we plan for power and/or water hook-ups to some sites in Creekside? *Yes, 100%*
7. Anything else? *Small dump by entrance to Creekside*
8. Other amenities you think we should provide? *Some Creekside with Sewer Hookup? 25%*

Please provide input: by scanning or taking a photo of your input and emailing to: info@silverton.ca

OR drop it at the Village office THROUGH THE MAIL SLOT ON SOUTH DOOR
OR MAIL it to us at PO BOX 14, Silverton BC V0G 2B0

DEADLINE June 1st, 2020

LAKESIDE CAMPGROUND INPUT

Answers to questions posed:

1. Fewer campsites at Lakeside
2. No waterfront campsites - reserve the shoreline for communal enjoyment
3. Fewer campsites at Creekside
4. No RVs at Lakeside
5. Power hook-ups only at Lakeside - not water
6. Power hook-ups only at Creekside - not water
7. Improve the beach at Lakeside to encourage camper use and thus avoid tourist congestion at Coopers Beach
8. Communal water taps - not individual - in order to limit water use at times of scarcity in summer

Thank you for the opportunity to give our opinion on this subject. I sleep in tents, backpack tenting, canopy on my truck, a 27 ' travel trailer hotels and long term holiday rentals. They have advantages and disadvantages for various situations. I am not however aware of current "usage"/numbers of campers or the issues associated for making you say fewer campsites might be necessary. Covid 19?

Question:

1. You could have fewer campsites but do something nearby to accommodate more RVers.
2. Waterfront should be reserved and shared by all. But keep the waterfront for campground users.
3. Try to keep the same or arrange for alternate "overflow"
4. Most RVs are happy if they have full services. They even dont mind staying in a parking lot type of arrangement. Half of them dont get outdoors because these things are too comfortable. Let the small camping units be in the Lakeside and put the biggies elsewhere.
5. Keep Lakeside simple. See #4. Ever been in Lake Louise Overflow campground? I prefer it there when I'm in my RV and therefore let the traditional type camping spaces be available for the young families and youth.
6. Creekside might be okay with services. See #4.
7. What are the current issues and concerns that make for possible changes.
8. Longer term RVers are a possibility with this years Covid scenario. B.Cers and Albertans will not want to travel far. Silverton and New Denver offer a very special experience. Consider them as a unit with the future.



Village of Silverton Lakeside Campground Input

Dear Silverton Residents

Silverton Municipal Campground is undergoing major changes. We would like to hear from community how you might like to see it developed for the future. While we cannot invite the public into the current work zone, we invite you to take a look from the outside and share your thoughts with us.

Description: The Campground measures approximately 252' x 145' (roughly the same size as the Ball Field at Dewis Park). The Campground is bounded on three sides by roads (Leadville St., Turner St. and Water St.) and on the fourth side by Slocan Lake. There is a roadway that runs through the middle of the Campground, that provides access to washrooms, woodshed, etc. as well as to campsites. Because of the built-in infrastructure, we do not anticipate moving this roadway.

Questions:

1. We had 20 campsites at the Lakeside Campground; should we have that many in future, or fewer (keeping in mind that we may HAVE TO plan for fewer campsites for various reasons)?
2. We had 4 waterfront campsites; should we plan for waterfront campsites in the future, or should we reserve the shoreline for communal enjoyment?
3. We had 20 campsites in the Creekside Campground; should we have that many in future, or fewer (keeping in mind that we may HAVE TO plan for fewer campsites for various reasons)?
4. Should we continue to allow RVs in the Lakeside Campground, or should we allow them only in Creekside?
5. Should we plan for power and/or water hook-ups to some sites in Lakeside? NO
6. Should we plan for power and/or water hook-ups to some sites in Creekside? YES
7. Anything else?
8. Other amenities you think we should provide?

Please provide input: by scanning or taking a photo of your input and emailing to: info@silverton.ca

OR drop it at the Village office THROUGH THE MAIL SLOT ON SOUTH DOOR
OR MAIL it to us at PO BOX 14, Silverton BC V0G 2B0


DEADLINE June 1st, 2020

MY THOUGHTS ON THE CAMP GROUND

- * 20 CAMPSITES SEEMS LIKE A GOOD NUMBER. IT WOULD HELP TO DO A PLOT PLAN OF THE PROPERTY WITH THE PROPOSED LAYOUT(S) CIRCULATED.
- * THE SHORELINE SHOULD BE AVAILABLE FOR COMMUNAL USE (ALL CAMPERS). THERE SHOULD BE A WAY TO DO THIS AND KEEP THE DESIRABLE WATERFRONT CAMPSITES. PERHAPS A PATHWAY ALONG THE WATERFRONT & SIGNAGE?
- * LARGER RV'S SHOULD BE AT CREEKSIDE.
- * NO MID TO LARGE RV'S IN WATERFRONT SITES TO MAINTAIN VIEWS OF LAKE & MOUNTAINS.
- * INSTALL POWER & WATER HOOKUPS TO MOST SITES ESPECIALLY THE LARGER SITES (LAKESTIDE CAMPGROUND).
- * INSTALL POWER & WATER HOOKUPS FOR THE LOWER CREEKSIDE RV SITES (6 TO 10 SITES).
- * CLOSE OFF WATER ST. (IF NOT NEEDED BY ADJOINING RESIDENCES FOR ACCESS) & ADD THE LANE TO THE CAMPSITE AREA.

THANKS,

Lakeside Campground Input

- ① Restrict campgrounds at the lake to tents only
 - ② 4 sites along the lake convert to common area for all at campsites
 - ③ River camp area for campers, motor homes
 - ④ Install power for river camp and have water available. Also have washroom and shower, constructed similar to the one at the lake campground now.
 - ⑤ no generators use through both camp sites
- 



Village of Silverton

Lakeside Campground Input

Dear Silverton Residents:

Silverton Municipal Campground is undergoing major changes. We would like to hear from the community how you might like to see it developed for the future. While we cannot invite the public into the current work zone, we invite you to take a look from the outside and share your thoughts with us.

Description: The Campground measures approximately 252' X 145' (roughly the same size as the Ball Field at Dewis Park). The Campground is bounded on three sides by roads (Leadville St., Turner St. and Water St.) and on the fourth side by Slocan Lake. There is a roadway that runs through the middle of the Campground, that provides access to washrooms, woodshed, etc. as well as to campsites. Because of the built-in infrastructure, we do not anticipate moving this roadway.

Questions:

1. We had 20 campsites at the Lakeside Campground: should we have that many in future, or fewer (keeping in mind that we may HAVE TO plan for fewer campsites for various reasons)?
2. We had 4 waterfront campsites: should we plan for waterfront campsites in the future, or should we reserve the shoreline for communal enjoyment?
3. We had 20 campsites in the Creekside Campground: should we have that many in future, or fewer (keeping in mind that we may HAVE TO plan for fewer campsites for various reasons)?
4. Should we continue to allow RVs in the Lakeside Campground, or should we allow them only in Creekside?
5. Should we plan for power and/or water hook-ups to some sites in Lakeside?
6. Should we plan for power and/or water hook-ups to some sites in Creekside?
7. Anything else?
8. Other amenities you think we should provide?

RECEIVED

Please provide input: by scanning or taking a photo of your input and emailing to: info@silverton.ca

OR drop it at the Village office **THROUGH THE MAIL SLOT ON SOUTH DOOR**

OR MAIL it to us at **PO BOX 14, Silverton BC V0G 2B0**

DEADLINE June 1st, 2020

I LIKE THE IDEA OF LEAVING THE 4 LAKE CAMPSITE FOR ALL THE CAMPERS TO USE (communal enjoyment).



Village of Silverton

Lakeside Campground Input

Dear Silverton Residents:

Silverton Municipal Campground is undergoing major changes. We would like to hear from the community how you might like to see it developed for the future. While we cannot invite the public into the current work zone, we invite you to take a look from the outside and share your thoughts with us.

Description: The Campground measures approximately 252' X 145' (roughly the same size as the Ball Field at Dewis Park). The Campground is bounded on three sides by roads (Leadville St., Turner St. and Water St.) and on the fourth side by Slocan Lake. There is a roadway that runs through the middle of the Campground, that provides access to washrooms, woodshed, etc. as well as to campsites. Because of the built-in infrastructure, we do not anticipate moving this roadway.

Questions:

1. We had 20 campsites at the Lakeside Campground: should we have that many in future, or fewer (keeping in mind that we may HAVE TO plan for fewer campsites for various reasons)? *FEWER*
2. We had 4 waterfront campsites: should we plan for waterfront campsites in the future, or should we reserve the shoreline for communal enjoyment? *YES*
3. We had 20 campsites in the Creekside Campground: should we have that many in future, or fewer (keeping in mind that we may HAVE TO plan for fewer campsites for various reasons)? *SAME OR FEWER*
4. Should we continue to allow RVs in the Lakeside Campground, or should we allow them only in Creekside? *CREEKSIDE ONLY*
5. Should we plan for power and/or water hook-ups to some sites in Lakeside?
6. Should we plan for power and/or water hook-ups to some sites in Creekside? *NO*
7. Anything else?
8. Other amenities you think we should provide? *NO*

Please provide input: by scanning or taking a photo of your input and

Response to lakeside Campground input request

May 25 2020

Questions

1 20 campsites seems about right..

2 The waterfront campsites should remain. Further development of Cooper's beach and perhaps development of the public beach in front of _____ would provide better beach front.

3 20 campsites seems about right.

4 Lakeside sites that provide enough area and reasonable access should handle most RV's. Angle the sites adjacent to Water Street to provide easy access might work for 4-6 larger sites

5/6 Electric and water hookups would be useful in larger RV sites. Perhaps 4-6 in each campground. Without knowing the costs it is difficult to know if this is a reasonable idea.

7 The boatlaunch turnaround area needs to be properly identified signed and kept clear of campers and their vehicles. No campsite access from the turnaround would be helpful.

8 It might be a good idea to change Water St into a lane and centre the lane in the lane allowance.

9 If you put electric/water hookups anywhere in the campsites it is essential that the rules of occupancy preclude anyone from setting up as a semi-permanent residence – ie seasonal workers who simply bring a trailer/RV and plan to leave it there for the season.

10 Sites with water /electric hookups will need to be well defined and not customizable by campers. Hookups generally are in the centre /third of the site to match the access on the RV/ trailer.

11 A proposed site plan should be available to residents for review/input and agreement along with budget numbers prior to any construction activity

Nice to see the Village reaching out for comments. Those of us who live close to the campground are most impacted by the plans.



Village of Silverton

Lakeside Campground Input

Dear Silverton Residents:

Silverton Municipal Campground is undergoing major changes. We would like to hear from the community how you might like to see it developed for the future. While we cannot invite the public into the current work zone, we invite you to take a look from the outside and share your thoughts with us.

Description: The Campground measures approximately 252' X 145' (roughly the same size as the Ball Field at Dewis Park). The Campground is bounded on three sides by roads (Leadville St., Turner St. and Water St.) and on the fourth side by Slocan Lake. There is a roadway that runs through the middle of the Campground, that provides access to washrooms, woodshed, etc. as well as to campsites. Because of the built-in infrastructure, we do not anticipate moving this roadway.

Questions:

1. We had 20 campsites at the Lakeside Campground: should we have that many in future, or ⁽¹⁵⁾ fewer (keeping in mind that we may HAVE TO plan for fewer campsites for various reasons)?
2. We had 4 waterfront campsites: should we plan for waterfront campsites in the future, or should we reserve the shoreline for communal enjoyment? ^{yes} No
3. We had 20 campsites in the Creekside Campground: should we have that many in future, or fewer (keeping in mind that we may HAVE TO plan for fewer campsites for various reasons)?
4. Should we continue to allow RVs in the Lakeside Campground, or should we allow them only in Creekside? ¹⁵ Large Small
5. Should we plan for power and/or water hook-ups to some sites in Lakeside? No
6. Should we plan for power and/or water hook-ups to some sites in Creekside? Only if ^{can get a grant}
7. Anything else?
8. Other amenities you think we should provide?

Please provide input: by scanning or taking a photo of your input and emailing to: info@silverton.ca

OR drop it at the Village office **THROUGH THE MAIL SLOT ON SOUTH DOOR**

OR MAIL it to us at **PO BOX 14, Silverton BC V0G 2B0**

DEADLINE June 1st, 2020



Hi · I read the latest info blurb in the Valley Voice about the Silverton campground. This article asked the public for input in how they would like the council to precede with future plans for said campground. I am writing in response to this request for input.

As a long-term resident, local business owner and former village councillor, I am familiar with the issues surrounding the campground. I have given it much thought and have come to the following conclusions....

- 1) The campground doesn't really make much money for the village when all expenses are considered, and the land is a valuable resource that may be better placed to suit another purpose.
- 2) The portion of the campground near the lake has some important impacts on the people that live near this portion of the campground.
- 3) The campground doesn't really have a major impact on the revenue stream for the village residents and businesses, with the one exception which may be the building supply store, (this influence is minor).
- 4) The influx of summer campers has a detrimental effect on full time residents by increasing all types of traffic and noise. It increases traffic on the lake and increases the pollution index of the village, as there is no sewage treatment facilities to handle the high volume of sewage created.
- 5) The liability to the village by having a campground can be quite high. Imagine a tree falling falling down on a tent or camper in a high wind storm.
- 6) Campground exist in New Denver and Slocan which have businesses that can take advantage of them....even so, Slocan does not take up their valuable water front property as a campground. I think this adequately serves the local businesses that can capture this market.
- 7) If Silverton sees the need to have a campground, it should be at the realization that it does little to advantage the Village residents and in fact does much to cause inconvenience.
- 8) if the council sees a pressing need to run a campground with little financial remuneration and much inconvenience to the residents, perhaps further development of the creek side campground would be sufficient.

Thank you for asking for public input into this issue. This is a topic I have long thought about and I am glad to have the opportunity to express my opinion.

MAY 18 | 2020

DEAR SILVERTON COUNCIL

RECEIVED
May 19 2020

IN YOUR DESCRIPTION YOU HAVE
THE MEASUREMENTS OF THE CG.
TO BE 252' x 145'.

THIS IS INCORRECT AS IT
MEASURES 252' x 195'. ARE YOU ALREADY
ASSUMING THE 70' WIDE STREET?

AT THIS POINT I SHOULD

TELL YOU WHAT YOU CAN DO WITH YOURSELVES,
BUT I WILL ~~CARRY~~ ON ASSUMING THE
MISTAKES ON YOUR PART!

YES, THE 70' WIDE STREET WOULD MAKE
THE AND THE VERY
HAPPY. THE WOULD GET THE STRAIT-ON
ACCESS TO THEIR GARAGE AND WHIP OUT TWO
LAKE SHORE CAMPSITES AS THE TREE HAS ALREADY
BEEN REMOVED. THEY REALLY ARE TRYING TO
GET RID OF THE WHOLE CAMPGROUND AND
TOURISM IN SILVERTON. THIS HAS BEEN GOING
ON FOR YEARS. HE'S JUST USING THE

THE WILL STILL KEEP
COMPLAINING NO MATTER WHAT. DOES
NOT GO TO BED UNTIL AT LEAST 3:00 A.M.
AND EXPECTS TO BE ABLE TO SLEEP

TILL NOON EVERY DAY.

I WOULD LIKE TO REMIND YOU THAT THE CAMPGROUND WAS THERE LONG BEFORE EITHER OF THEM.

SOME OF THE NEIGHBORS AROUND ME SUPPORT THE STREET AS IT IMPROVES THEIR VIEWS. THIS IS HARDLY AN EXCUSE TO DESTROY CAMPING IN SILVERTON. THEY ARE JUST BEING SELFISH!

NOW, BACK TO THE MAIN TOPIC!

THE GUYS DID A GREAT JOB ON FALLING, DIGGING OUT ROOTS, AND ADDING FILL.

THE CAMPGROUND IS ALMOST EXACTLY AS IT WAS - ONLY BETTER. THERE IS MORE ROOM IN THE UPPER SECTIONS - BOTH NORTH AND SOUTH. THE MIDDLE IS MUCH MORE ACCESSIBLE WITH FEWER TREES. THE LAKE ^{SITES} ~~AREA~~ EXACTLY THE SAME. WE COULD GET 3 MORE SITES IN THE NORTH, - TWO MORE SITES IN THE CENTRE - LAKE SHORE IS THE SAME - THREE MORE SITES ON THE SOUTH. I EVEN HAVE A PLAN TO SATISFY THE... WE COULD LEAVE A BIG TURNING AREA IN FRONT OF THEIR HOLE IN THE FENCE.

DON'T BE PLANING ON GETTING RID OF THE CAMPGROUND!

ATTACHED IS A SCETCH



POSSIBLY 27
CYTES

WATER ALLEY 201

TURNER 70'

LEADVILLE 100'

DOCK

LAKE

CARRYING WITH YOUR QUESTIONS.

1. MORE CAMPSITES WOULD BE BETTER.
WHAT ARE THE VARIOUS REASONS?
2. WE STILL HAVE FOUR L.S. CAMPSITES
HAVE YOU ALREADY FALLEN INTO
... TRAP TO BUILD HIS DRIVEWAY
THROUGH THE TWO LAKESHOR SITES?
WE HAVE LOTS OF OTHER PLACE TO ENJOY
3. SAME AS 1.
4. I LIVE HERE, R.V.'S HAVE BEEN NO
PROBLEM. THAT WOULD BE A SILLY
RULE. AND WHO AROUND HERE WOULD
ENFORCE IT?
5. NO! WE COULD USE ONE MORE
TAP ON NORTH SIDE
THERE IS - OR AT LEAST WAS - ONE ON
THE SOUTH SIDE. THERE IS ONE
IN THE MIDDLE, HAVE YOU EVER
TRIED TO DIG A WATER LINE IN ROCKS?
6. NO! TWO WATER LINES ALREADY.



Village of Silverton Lakeside Campground Input

Dear Silverton Residents:

Silverton Municipal Campground is undergoing major changes. We would like to hear from the community how you might like to see it developed for the future. While we cannot invite the public into the current work zone, we invite you to take a look from the outside and share your thoughts with us.

Description: The Campground measures approximately 252' X 145' (roughly the same size as the Ball Field at Dewis Park). The Campground is bounded on three sides by roads (Leadville St., Turner St. and Water St.) and on the fourth side by Slocan Lake. There is a roadway that runs through the middle of the Campground, that provides access to washrooms, woodshed, etc. as well as to campsites. Because of the built-in infrastructure, we do not anticipate moving this roadway.

Questions:

Keep the 20.

1. We had 20 campsites at the Lakeside Campground: should we have that many in future, or fewer (keeping in mind that we may HAVE TO plan for fewer campsites for various reasons)?
2. We had 4 waterfront campsites: should we plan for waterfront campsites in the future, or should we reserve the shoreline for communal enjoyment? *Reserve the shoreline for everyone.*
3. We had 20 campsites in the Creekside Campground: should we have that many in future, or fewer (keeping in mind that we may HAVE TO plan for fewer campsites for various reasons)? *Keep 20 campsites*
4. Should we continue to allow RVs in the Lakeside Campground, or should we allow them only in Creekside? *Either lakeside or Creekside 1st come.*
5. Should we plan for power and/or water hook-ups to some sites in Lakeside? *Yes*
6. Should we plan for power and/or water hook-ups to some sites in Creekside? *Yes*
7. Anything else?
8. Other amenities you think we should provide? *NO*

Please provide input: by scanning or taking a photo of your input and emailing to: info@silverton.ca

OR drop it at the **Village** office **THROUGH THE MAIL SLOT ON SOUTH DOOR**
OR MAIL it to us at **PO BOX 14, Silverton BC V0G 2B0**

DEADLINE June 1st, 2020





Village of Silverton Lakeside Campground Input

Dear Silverton Residents:

Silverton Municipal Campground is undergoing major changes. We would like to hear from the community how you might like to see it developed for the future. While we cannot invite the public into the current work zone, we invite you to take a look from the outside and share your thoughts with us.

Description: The Campground measures approximately 252' X 145' (roughly the same size as the Ball Field at Dewis Park). The Campground is bounded on three sides by roads (Leadville St., Turner St. and Water St.) and on the fourth side by Slocan Lake. There is a roadway that runs through the middle of the Campground, that provides access to washrooms, woodshed, etc. as well as to campsites. Because of the built-in infrastructure, we do not anticipate moving this roadway.

Questions:

1. We had 20 campsites at the Lakeside Campground: should we have that many in future, or fewer (keeping in mind that we may HAVE TO plan for fewer campsites for various reasons)?
The same amount

2. We had 4 waterfront campsites: should we plan for waterfront campsites in the future, or should we reserve the shoreline for communal enjoyment?
Same as before

3. We had 20 campsites in the Creekside Campground: should we have that many in future, or fewer (keeping in mind that we may HAVE TO plan for fewer campsites for various reasons)?
The same amount

4. Should we continue to allow RVs in the Lakeside Campground, or should we allow them only in Creekside?
Allow them at Lakeside & Creekside

5. Should we plan for power and/or water hook-ups to some sites in Lakeside?
definetly Yes

6. Should we plan for power and/or water hook-ups to some sites in Creekside?
Yes definetly

7. Anything else?
We should plant smaller trees for the area.

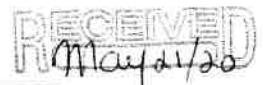
8. Other amenities you think we should provide?
Ice, fire wood like we used too.

Maybe input from a campground attendant example
Please provide input by scanning or taking a photo of your input and emailing to: info@silverton.ca

OR drop it at the Village office THROUGH THE MAIL SLOT ON SOUTH DOOR

OR MAIL it to us at PO BOX 14, Silverton BC V0G 2B0

DEADLINE June 1st, 2020



From New Denver's Last year



Village of Silverton

Lakeside Campground Input

Dear Silverton Residents:

Silverton Municipal Campground is undergoing major changes. We would like to hear from the community how you might like to see it developed for the future. While we cannot invite the public into the current work zone, we invite you to take a look from the outside and share your thoughts with us.

Description: The Campground measures approximately 252' X 145' (roughly the same size as the Ball Field at Dewis Park). The Campground is bounded on three sides by roads (Leadville St., Turner St. and Water St.) and on the fourth side by Slocan Lake. There is a roadway that runs through the middle of the Campground, that provides access to washrooms, woodshed, etc. as well as to campsites. Because of the built-in infrastructure, we do not anticipate moving this roadway.

Questions:

1. We had 20 campsites at the Lakeside Campground: should we have that many in future, or fewer (keeping in mind that we may HAVE TO plan for fewer campsites for various reasons)?
The same amount
2. We had 4 waterfront campsites: should we plan for waterfront campsites in the future, or should we reserve the shoreline for communal enjoyment?
Yes we must keep waterfront.
3. We had 20 campsites in the Creekside Campground: should we have that many in future, or fewer (keeping in mind that we may HAVE TO plan for fewer campsites for various reasons)?
Yes same amount.
4. Should we continue to allow RVs in the Lakeside Campground, or should we allow them only in Creekside?
Yes they should be allowed.
5. Should we plan for power and/or water hook-ups to some sites in Lakeside?
Yes
6. Should we plan for power and/or water hook-ups to some sites in Creekside?
Yes.
7. Anything else?
Plant trees that dont grow tall.
8. Other amenities you think we should provide?
Firewood box free for campers.

Please provide input: by scanning or taking a photo of your input and emailing to: info@silverton.ca

OR drop it at the Village office THROUGH THE MAIL SLOT ON SOUTH DOOR

OR MAIL it to us at PO BOX 14, Silverton BC V0G 2B0

DEADLINE June 1st, 2020

RECEIVED
May 21/20

Village of Silverton - Lakeside Campground Input

Question:

1. 15 campsites sound good. If Water Street has to have a 60 foot allowance, space in the campground will be slightly reduced. Most campers prefer a little space around them for privacy and quiet. I would like to the sites allow for that, making this campground unique. Shrubs and trees between the campsites are a must. This campground should just as beautiful as the surroundings.
2. Keep the 4 waterfront campsites, there is still the beach for everyone to enjoy.
3. 20 campsites at Creekside are too many. The last few campsites (close to the bridge) are missing a safety fence between the campsites and the creek.
4. Larger RV do have trouble getting into the sites at Lakeside...either take this into consideration when designing the campsites or send them to the Creekside
5. and 6. Yes some power and water hook-ups should be provided in both campgrounds... but not all.
7. Opinion - We, the village of Silverton, have the opportunity to provide outstanding campsites in both campgrounds. The views and water provide entertainment for the tourist, while bringing money into the community, BUT this is a village first. I think it is highly important to hire a professional park designer, using plants and natural beauty to enhance the campsite and making Silverton a place to travel to, not just travel thru, and in the off season give the villagers a place to walk thru and enjoy and be proud of. Even perhaps offering design "competition". Please do not go for the "quick fix."
8. No other amenities, except for a larger area for information about events/history/maps etc that won't get wet or blown down.

RECEIVED
May 21/20



Completed by a homeowner / tax payer of Silverton.
Village of Silverton Lakeside Campground Input

Dear Silverton Residents:

Silverton Municipal Campground is undergoing major changes. We would like to hear from the community how you might like to see it developed for the future. While we cannot invite the public into the current work zone, we invite you to take a look from the outside and share your thoughts with us.

Description: The Campground measures approximately 252' X 145' (roughly the same size as the Ball Field at Dewis Park). The Campground is bounded on three sides by roads (Leadville St., Turner St. and Water St.) and on the fourth side by Slocan Lake. There is a roadway that runs through the middle of the Campground, that provides access to washrooms, woodshed, etc. as well as to campsites. Because of the built-in infrastructure, we do not anticipate moving this roadway.

Questions:

1. We had 20 campsites at the Lakeside Campground: should we have that many in future, or fewer (keeping in mind that we may HAVE TO plan for fewer campsites for various reasons)? *Same*
2. We had 4 waterfront campsites: should we plan for waterfront campsites in the future, or should we reserve the shoreline for communal enjoyment? *Yes, Waterfront sites are needed*
3. We had 20 campsites in the Creekside Campground: should we have that many in future, or fewer (keeping in mind that we may HAVE TO plan for fewer campsites for various reasons)? *Same*
4. Should we continue to allow RVs in the Lakeside Campground, or should we allow them only in Creekside? *In both. But no massive motorhome pads.*
5. Should we plan for power and/or water hook-ups to some sites in Lakeside? *No. Keep as is.*
6. Should we plan for power and/or water hook-ups to some sites in Creekside? *No. Keep as is.*
7. Anything else? *I'd like to see the campsites roughly the same as before. No need to change a good thing.*
8. Other amenities you think we should provide?

Please have staff get the grounds 'back in shape' for this July/Aug.
 Please provide input: by scanning or taking a photo of your input and

emailing to: info@silverton.ca

OR drop it at the Village office THROUGH THE MAIL SLOT ON SOUTH DOOR

OR MAIL it to us at PO BOX 14, Silverton BC V0G 2B0

DEADLINE June 1st, 2020



Keep as was just please be sure to have running

Village of SILVERTON

LAKE SIDE CAMPGROUND IN PAR

1. SAME 20 Campsites
2. KEEP AS CAMPSITES
3. SAME 20 CAMPSITES
4. LAKE SIDE 24' & smaller RV'S
CREEK SIDE - ANY SIZE
5. YES - POWER ON SOME + Bath on others
6. YES - POWER + WATER on ALL
7. No
8. BATHROOM IS WONDERFUL -